



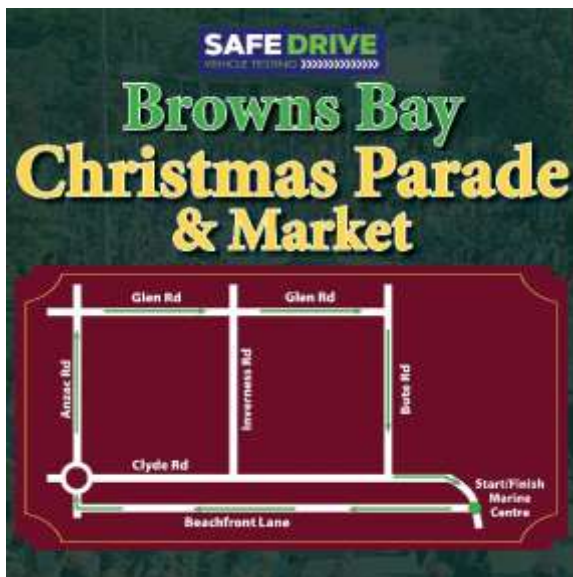
#### PARADE ASSEMBLY

- Your group will be issued with an arrival time two weeks prior to the parade. Please adhere to this time.
- Parade participants will assemble in Bayview Road, the northern end of Clyde Road and Manly Esplanade (in front of The Sands).
- No float participants will be able to park private vehicles at the assembly point.
- Upon your arrival at the assembly area, a parade marshal will direct you into position. Please remain in the order that you have been given.

#### PARADE DEPARTURE

- The parade starts at 5.00pm sharp. Your group must be assembled and ready to depart at this time.
- Please instruct your driver to drive at a slow, walking pace throughout the parade. Should a large gap open up between you and the group in front please pick up the pace slightly to close the gap.
- Walking groups should not stop to do a demonstration as this creates large gaps in the parade.

#### PARADE ROUTE



#### END OF PARADE

- All participants are required to stay in the procession until they reach the dispersal point at the end of the parade.
- At the discretion of a marshal, roadworthy vehicles will be able to continue home up Valley Road.
- Children may not depart from the parade end point until they are accompanied by an adult.

If you have any concerns, please call the parade manager, Kim Murdoch, on 022 047 9740.